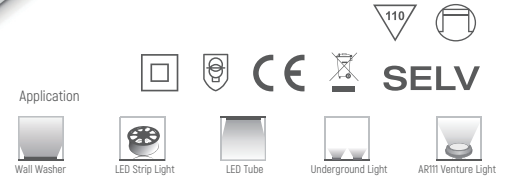


DLP240-1H24V-B

Product Features

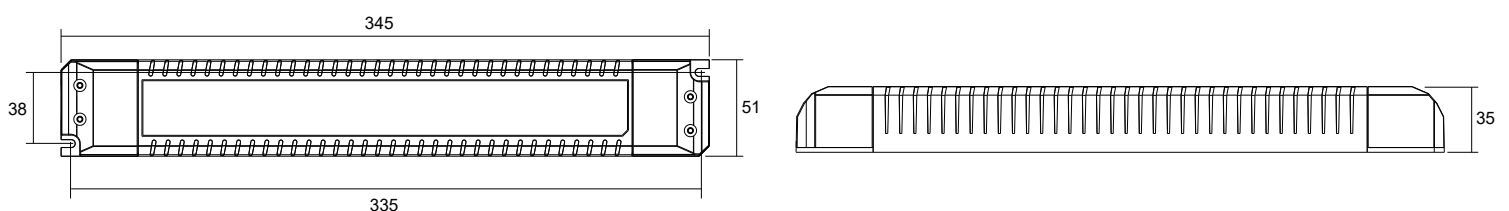
- A channel constant voltage output
- Applicable to indoor LED lights
- high efficiency, high reliability and long life time
- -20°C ~ +50°C, working temp
- Protections: Over Current, Over voltage, Short circuit self-recovery protection
- The typical efficiency of the machine is up to 93%
- Compliance with CE and ROHS
- 100% Full load aging test



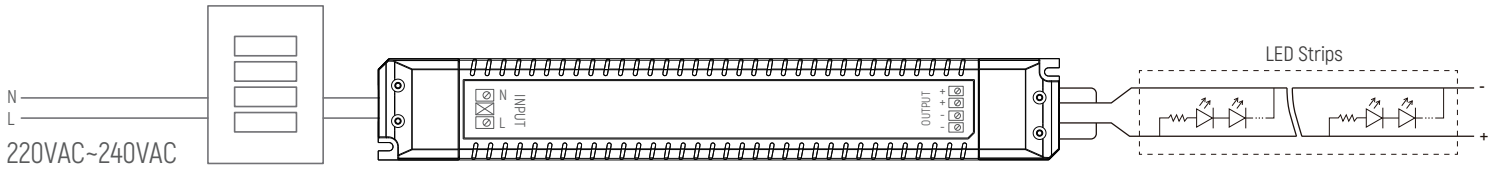
Technical Parameters

Model	DLP240-1H24V-B	
Input	Efficiency	≥93%@230VAC, full load
	Voltage	220VAC~240VAC
	Frequency Range(Hz)	50/60Hz
	Power Factor	≥0.95@230VAC, full load
	THD(full load)	<10%@230VAC, full load
	AC Current(max)	1.35Amax@230VAC
	Inrush current	Cold start,51.8A@230VAC 150us
	No load power	≤0.5W
	Turn on delay Time	≤ 0.5s, at230Vac (When the light begins to shine)
Output	Voltage (VDC)	24VDC
	Voltage Range	24V±5%
	Current(mA)	10A
	Power(W)	240W
	Channel	1
	Voltage ripple	< 3%
Protection	Over load	Output hiccup, after troubleshooting self recovery
	Short circuit	Short circuit no output, troubleshooting output normal
	Over Current	Output hiccup, after troubleshooting self recovery
Safety& EMC	Surge	L-N 1000VAC
	Withstand Voltage	Input-output 3750Vac/1min/<5mA
	Performance standard	EN61347, GB19510
	EMC Eission	EN55015, EN61000-3-2
	EMC Immunity	EN61000-4-2, 3, 4, 5, 6, 8, 11; EN61547
	Insulation Resisance	5MΩ
Others	Working Temp.	ta: -20°C~50°C
	Storage Temp., Humidity	-40°C~80°C, 20-90%RH
	tc	90°C @230Vac
	Material	PC
	IP Rating	IP20
	Lifetime	50,000h@tc:80 C
	Warranty Condition	5 years
	Switch Cycle	25,000 times
	Packing(weight)	Net weight: 400g±5%/PCS;20PCS/Carton;8kg±5%/Carton; Carton Size:360*285*180mm(L*W*H)
	Dimension	345*51*35mm (L*W*H)

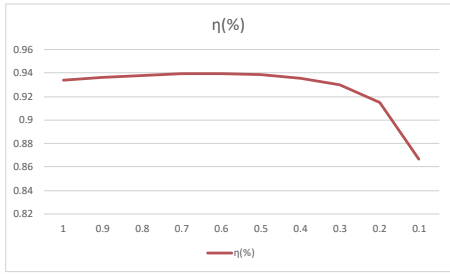
Dimension(mm)



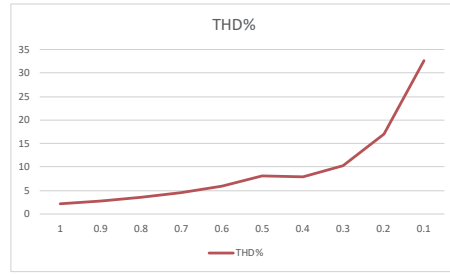
Wiring



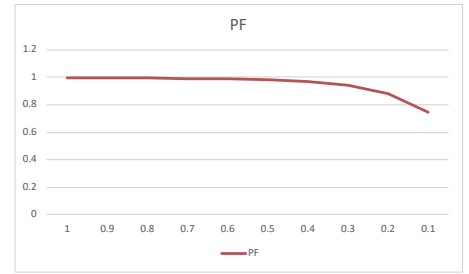
Eff. vs 负载



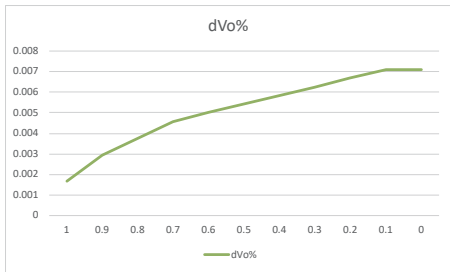
THD



PF vs 负载



降额曲线



Nameplate

	<p>DREAMOTIV An Euchips brand</p>	<p>Electronic LED Converter</p>	<p>LED控制装置</p>	<p>•tc 107202730101</p>	
		<p>DLP240-1H24V-B</p> <p>PR1: Uin: 220-240V~ 50/60Hz λ:0.95 Iin:1.35A SEC: Prated: 240W Irated: 10A Urated: 24V== ta: -20~50°C tc:90°C For LED modules only</p>			

Cautions

- 1.The product shall be installed and serviced by a qualified person.
- 2.This product is non-waterproof. Please avoid the sun and rain. When installed outdoors please ensure it is mounted in a water proof enclosure.
- 3.Good heat dissipation will prolong the working life of the controller. Please ensure good ventilation.
- 4.Please check if the output voltage and current of any LED power supplies used comply with the requirement of the product.
- 5.Please ensure that adequate sized cable is used from the controller to the LED lights to carry the current. Please also ensure that the cable is secured tightly in the connector.
- 6.For safety consideration, PVC or rubber cord of 0.75-1.5mm² is recommended for input and output terminal(s). Flat power cord is not suitable. Ensure all wire connections and polarities are correct before applying power to avoid any damages to the LED lights.
- 7.The power supply should be strictly and reliably grounded to prevent electric shock.
- 8.If a fault occurs please return the product to your supplier. Do not attempt to fix this product by yourself.
9. Suggest Load ≥15%

※ The contents of this manual are updated without prior notice. If the function of the product you are using is inconsistent with the instructions, the function of the product shall prevail. Please contact us if you have any questions.